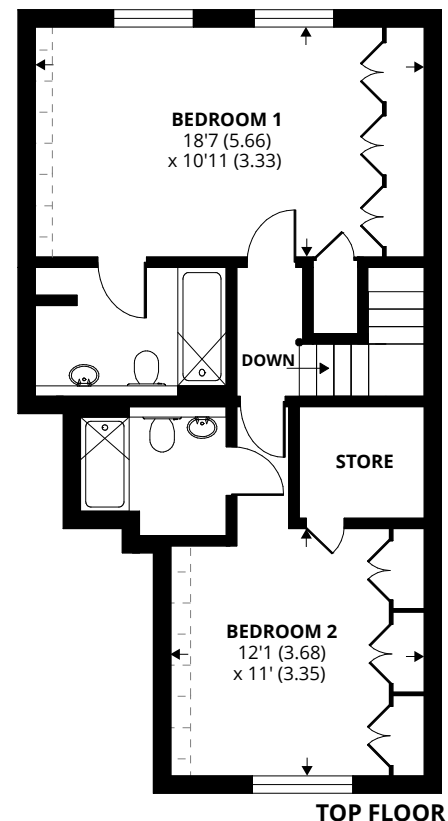
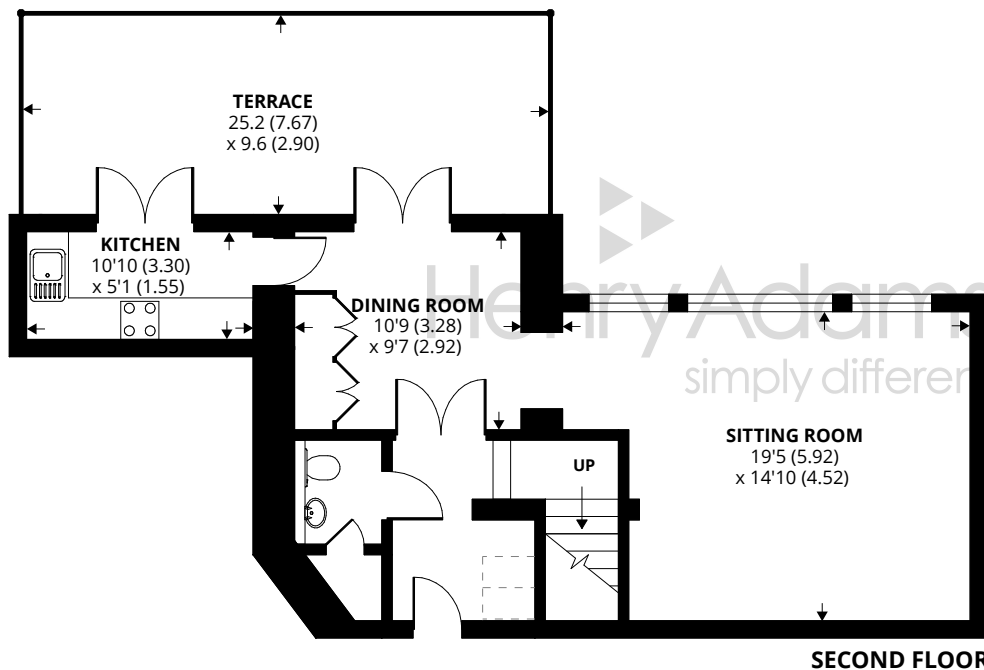




Denotes restricted head height



97 King Edward VII Apartments, Kings Drive, Midhurst

Approximate Area = 1150 sq ft / 106.8 sq m

Limited Use Area(s) = 8 sq ft / 0.7 sq m

Total = 1158 sq ft / 107.5 sq m

For identification only - Not to scale



Floor plan produced in accordance with RICS Property Measurement Standards incorporating International Property Measurement Standards (IPMS2 Residential). © nchecom 2020. Produced for Henry Adams. REF: 639226