

nichecom
DRAFT COPY FOR PROOFING PURPOSES ONLY

Dryden Road, Wimbledon SW19
Guide Price: £500,000 Share of Freehold

2 1 1

- South Facing Garden
- Potential to Extend (STPP)
- EPC EER C
- 2 Double Bedrooms
- Share of Freehold
- Contemporary Finish Throughout



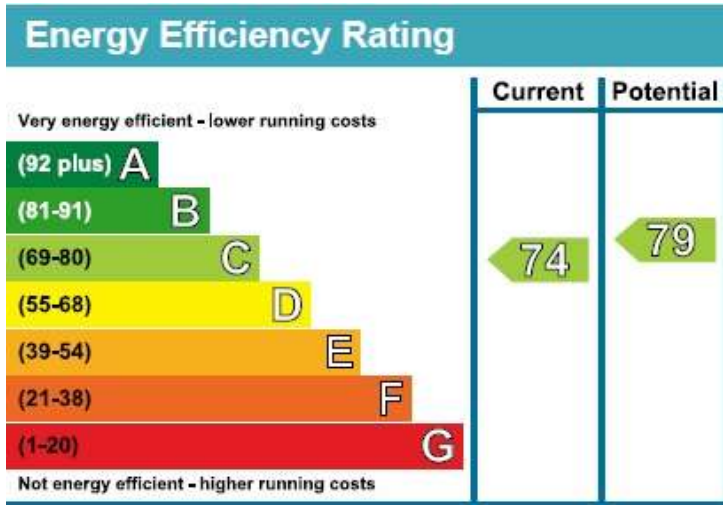
Property Details

A very well presented two bedroom, first floor Victorian conversion flat with private access to a South-facing rear garden, conveniently situated for access to Haydons Road Thameslink station. The Garfield Road recreation ground and Wandle Meadow nature park are both less than a 5 minute walk via the Wandle Trail running alongside the River Wandle, which continues on to the boutique shops and restaurants of Merton Abbey Mills, with a recently refurbished Nuffield gym also very nearby. The property benefits from potential to extend into the loft, STPP, a recently refitted bathroom, modern, contemporary kitchen with integrated appliances, Share of Freehold and permitted on street parking. For more information or to arrange to view, please contact Lauristons Estate Agents in Wimbledon on 020 8946 9468.



nichecom

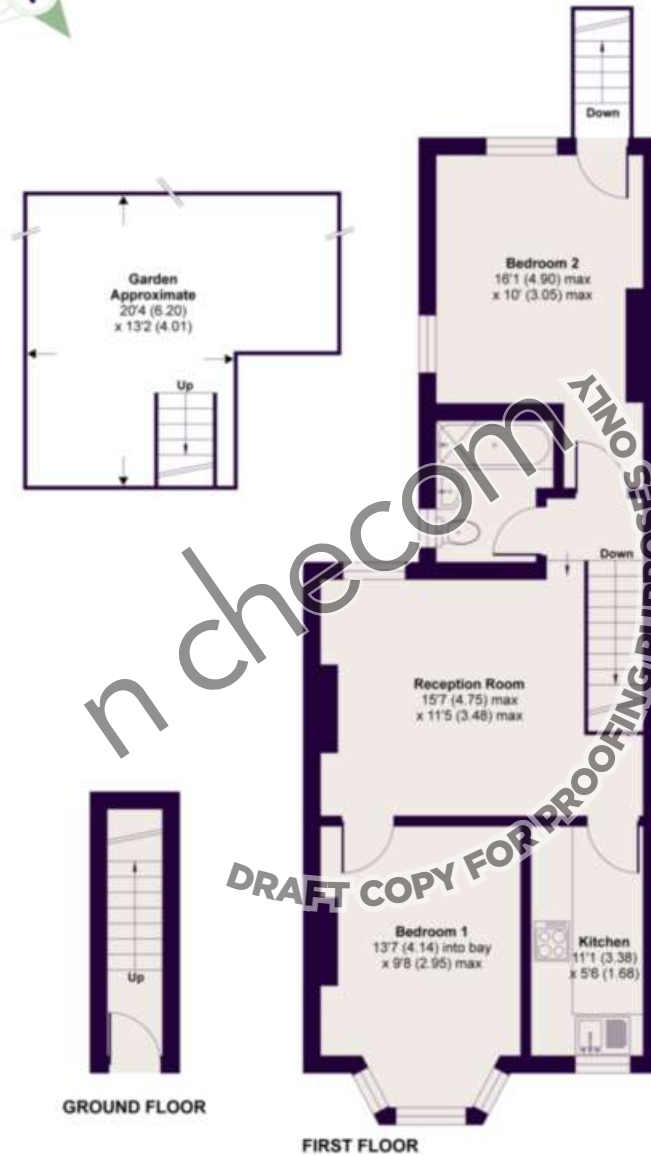
DRAFT COPY FOR PROOFING PURPOSES ONLY



Dryden Road, London, SW19

Approximate Area = 609 sq ft / 57 sq m

For identification only - Not to scale



n checom
DRAFT COPY FOR PROOFING/PURPOSES ONLY



Floor plan produced in accordance with RICS Property Measurement Standards incorporating International Property Measurement Standards (IPMS2 Residential). ©trichecom 2020. Produced for Lauristons. REF: 540446

If you have just started looking or have found your new home, you could benefit from talking to our Financial Services Department. For an informal discussion on anything from costs of moving to the most current mortgage rates please call us on 020 8946 9468. Your home is at risk if you do not keep up with repayments on a mortgage or any other loan secured on it. Written quotations available on request. Viewing is strictly through the owners Lauristons. Wimbledon Office 53 Wimbledon Hill Road, London SW19 7QW Tel: 020 8946 9468 Fax: 020 8946 9465 Email: sales.wimbledon@lauristons.com. For clarification we wish to inform potential purchasers that we prepared these particulars as a general guide. We have not carried out a detailed survey, nor tested the services, appliances and specific fittings. Lease details, where applicable, must be confirmed by your solicitor. Carpets, curtains, gas fires, electrical goods / fittings or other fixtures, unless expressly mentioned, are not included in the sales of this property. If there are any important matters which are unlikely to affect your decision to buy please contact this office and we will be pleased to check the information for you before viewing the property. Before this property can be removed from the market, all offers must be checked by Lauristons Financial Adviser. This is a service we offer on behalf of our clients. Please note that our room sizes are quoted in meters to the nearest tenth of a meter on wall to wall basis. The imperial equivalent is only intended as an approximate guide for those not fully conversant with the metric measurements. All measurements have been taken using a sonic tape measure and therefore may be subject to a small margin error.

We may refer you to recommended providers of ancillary services such as Conveyancing, Financial Services, Insurance and Surveying. We may receive a commission payment fee or other benefit (known as a referral fee) for recommending their services. You are not under any obligation to use the services of the recommended provider. The ancillary service provider may be an associated company of Lauristons Ltd.