

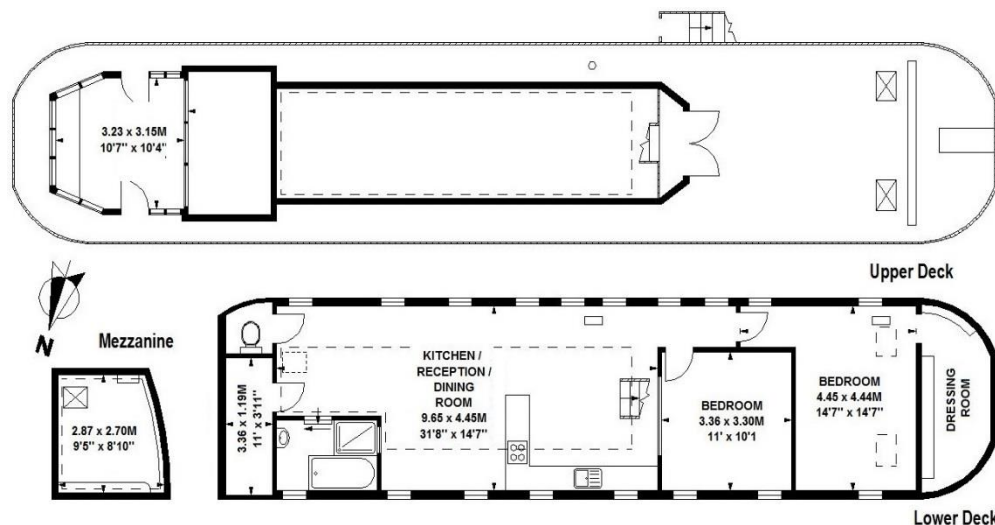


Greenland Dock Marina, Rotherhithe, SE16

£240,000 Residential Mooring

This 1935 Humber Keel vessel has been lovingly converted into a home on the water and offers an opportunity to acquire a unique luxury floating lifestyle within the gated community at Greenland Dock. The vessel, which is located on this secure residential mooring, comprises an open-plan reception, modern kitchen / diner, 2 double bedrooms, bathroom with separate shower, wheelhouse which can be used as an office and engine / storage room. Further benefits include a spacious deck offering views across the marina. Greenland Dock Marina is London's largest marina and is conveniently located on the south bank of the River Thames, two and a half miles downstream from Tower Bridge. Although large, the marina is a haven of peace with parks, attractions and facilities nearby. Public transport links are within walking distance in Canada Water Overground and Underground (Jubilee Line) and Surrey Quays Overground, giving easy access to Central London and the West End. The mooring has mains fed electricity and water and there are pump out facilities on site.

Unless riverhomes notifies you in writing, we are only selling this vessel and NOT the mooring. The rental of the mooring is by separate negotiation with the marina or mooring management, all prospective buyers should make their own enquiries with them directly to understand the ingoing costs and mooring fees payable by a new owner. Any mooring fees given here or verbally are approximate and intended as a guide only.



Key information

- **Local Authority:** London Borough of Southwark
- **Internal Area:** 1,119 sq. ft. / 104 sq. m.
- **Mooring fee:** £10,660 per annum
- Beautifully presented throughout
- Two double bedrooms
- Open-plan reception area
- Modern fitted kitchen/diner
- Bathroom with separate shower
- Spacious deck area